

SURFACETM

Design

By TechnoDesign

INSTALLATION INSTRUCTIONS

SELF-ADHESIVE WALL COVERING



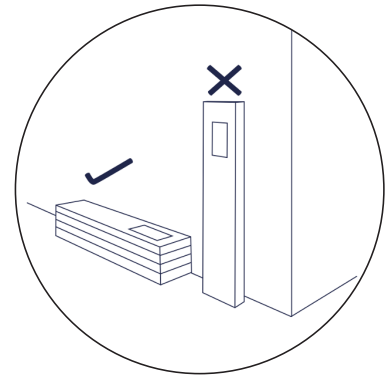
Read all instructions carefully prior to starting installation.

Always inspect the self-adhesive tiles upon opening the box, to check for defects.

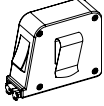
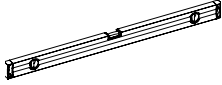

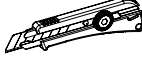
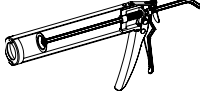







Put the tiles in the room where you plan to install them (at least 6 hours prior), so they acclimate to the temperature and humidity. Place them horizontally on a flat surface.

The temperature in the room where the tiles will be installed must be between 50 °F/10 °C and 82 °F/28 °C.

If you plan to affix the self-adhesive tiles on rough or porous walls, or if you have any doubts about their adhesion, we recommend first installing three tiles and letting the adhesive dry for 24 hours to validate.



1. TOOLS & MATERIALS REQUIRED

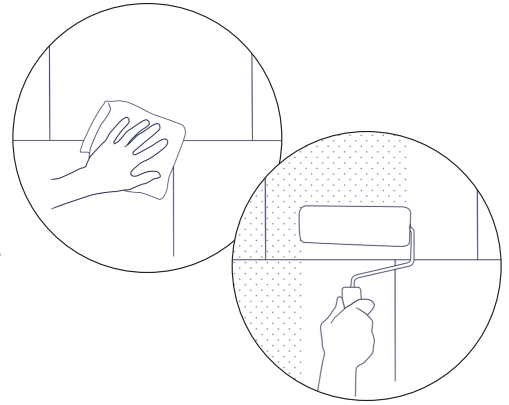
				
Measuring tape	Spirit level	Pencil	Utility knife	Caulking gun
				
Drill	Bi-metal hole saws	Drywall saw or oscillating saw	Paint brush and roller (if the surface is porous and needs to be sealed)	Sealer/primer (for porous walls)
				
Construction adhesive	Bathroom silicone sealant (for shower or bath installation)			

2. BEFORE STARTING INSTALLATION

- 2.1 Check that all the tiles in the different boxes are the same color and have the same batch number, to ensure a uniform tone.
- 2.2 The tiles will have slight shade and pattern variations for a natural look. It is recommended that you mix tiles from the different boxes and lay them out in the order you plan to install them prior to starting the installation.

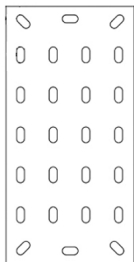
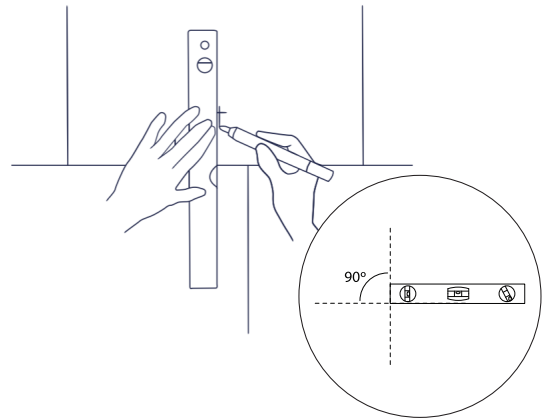
3. SURFACE PREPARATION

- 3.1 Make sure the surface is clean and free of dust or any other substances that can detach once the wall covering is installed (e.g. wallpaper, peeling paint, etc.).
 - 3.2 Surface Design tiles install directly on many surfaces. However, if your wall is porous (concrete, plaster, wood, etc.), we recommend first applying a sealant or a primer for better adhesion.
 - 3.3 Fill any holes, remove nails and screws, and level bumps on the wall's surface to remove any irregularities that could misalign the tiles or affect their adhesion. If necessary, repair any unevenness of the surface to ensure there are no slopes.
- ★ **IMPORTANT:** The self-adhesive tiles are flexible, but could detach from the wall or break if they are subject to constant, significant bending. The construction adhesive needs to be in direct contact with a smooth, solid and stable wall.



4. WALL INSTALLATION

- 4.1 Carefully measure each of the walls on which the tiles will be installed.
- 4.2 Using the spirit level, draw a horizontal line on each of the walls, to mark the center of the wall. Then draw a vertical line through this line on each wall. In drawing a cross shape, you will obtain four 90° angles, which will act as reference points for installing the first tile. Start installing the tiles from the center of the cross on each wall.
- 4.3 Place a sufficient quantity of adhesive in each opening to ensure a surface contact of at least 2 cm² (3/4").



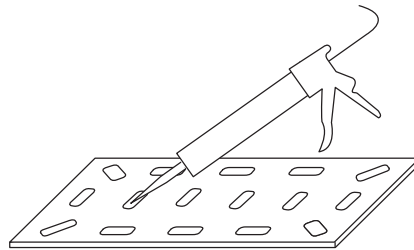
40 x 80 cm
(15,75 x 31,5")



30.5 x 61 cm
(12 x 24")



18.5 x 91.5 cm
(7,75 x 36")



- 4.4 Remove the protective film from the tile. **(Fig. 1)**
- 4.5 Position the first tile in one of the corners of the cross shape drawn on the middle of the wall. Apply light pressure on the tile from the edges toward the center for a few seconds to ensure proper adhesion. **(Fig. 2)**
- 4.6 Make sure the tile is level and straight. **(Fig. 3)**

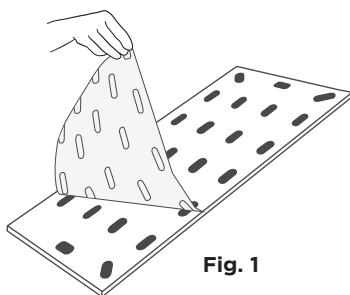


Fig. 1

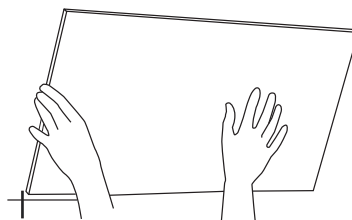


Fig. 2

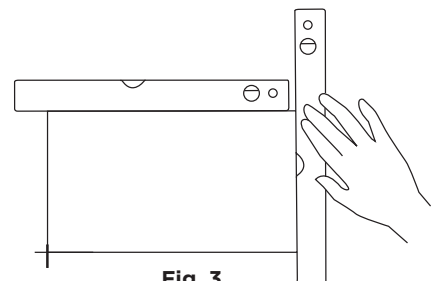
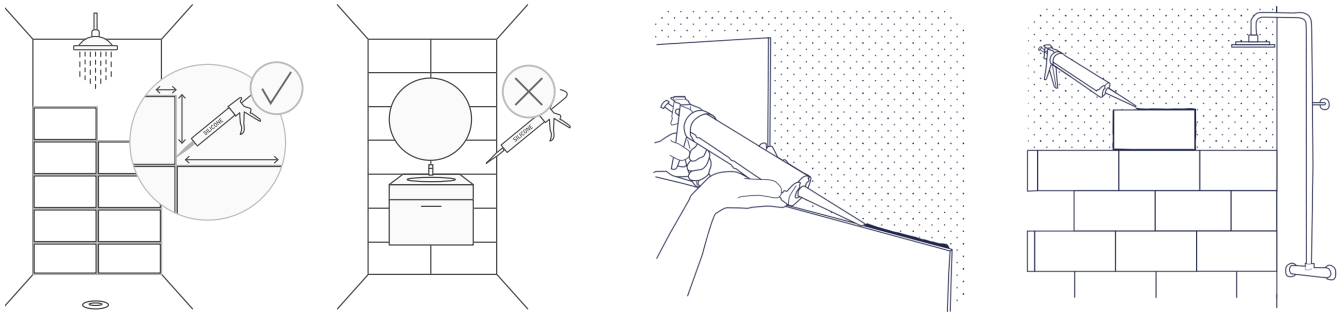


Fig. 3

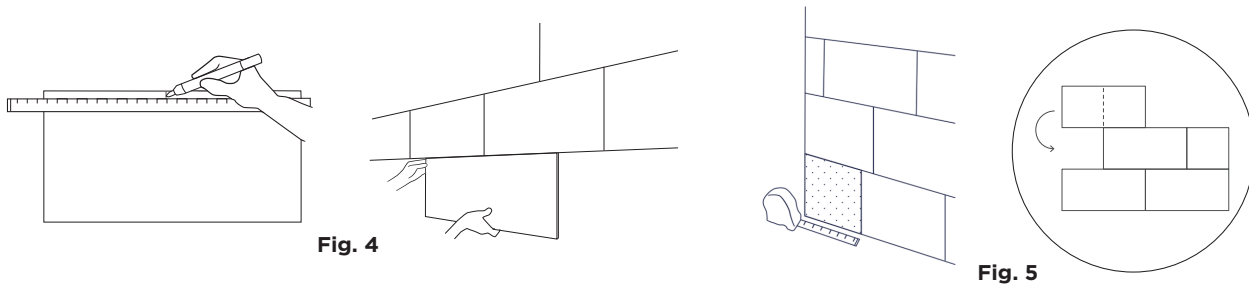
5. FOR A SHOWER OR BATHTUB INSTALLATION

- 5.1 Apply silicone sealant around the perimeter of each tile (before installing the next), to keep water from entering.
Do not put silicone on the surface of the tile.
- 5.2 Remove excess silicone with your finger.

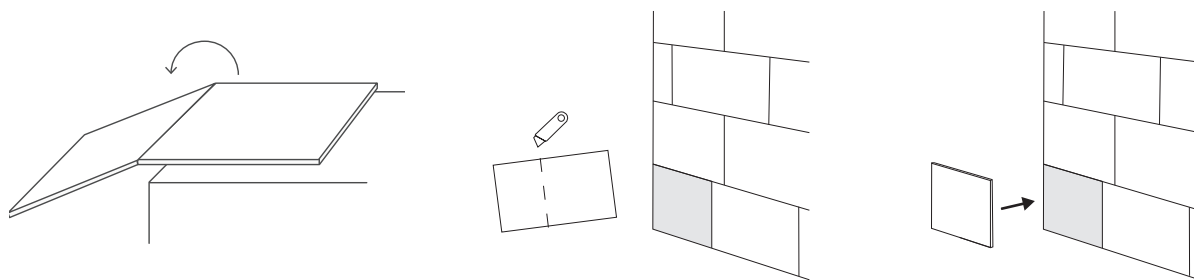


6. TO COMPLETE INSTALLATION

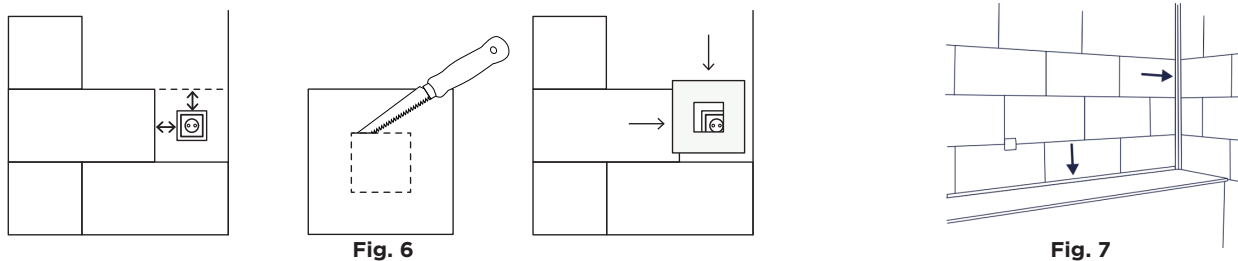
- 6.1 Follow the same steps to install the next tile, according to the installation configuration you have decided on. **(Fig. 4)**
- 6.2 When you reach the edge of the wall, measure the distance between the last tile installed and the wall. Mark the cut to make on the final tile. **(Fig. 5)**



- 6.3 To cut the tile, trace a line. Place a carpentry square or a metal ruler on the line and then run the utility knife gently along it three or so times.
- 6.4 Break the tile by pressing from the center toward the edges. Finish cutting the foam backing with the knife.



- 6.5 To cut holes for electrical outlets and plumbing fixtures, carefully measure and mark the corresponding cut-outs on the tile. Use the utility knife to cut where indicated. **(Fig. 6)**
- 6.6 For a perfect finish, use end trims in the corners. These can be found in any hardware store. **(Fig. 7)**



7. SURFACES SUITABLE FOR APPLICATION

SUITABLE FOR APPLICATION*:

- Ceramic, marble or porcelain tiles
- Painted drywall
- Solid wood or plank surfaces (painted or varnished) appropriately installed on studs

* The tiles can be installed on any of these surfaces as long as they are securely attached to the wall structure.

NOT SUITABLE FOR APPLICATION:

- Plaster walls with peeling paint
- Walls in rooms with constant high humidity (e.g. a sauna)
- Outdoor areas
- Surfaces exposed to extreme temperature changes

8. WARRANTY

This product is guaranteed against any manufacturing defects from the date of purchase indicated on the consumer sales receipt. This warranty is limited to the original owner and is not transferable to another consumer. Technoform Industries Ltd. offers a limited warranty of 10 years on its Surface Design tile's structure and surface (inks and varnishes). The warranty is applicable to the product only and does not cover labor charges, travel expenses, the cost of installation or removal, as well as carrier fees. At its discretion, the manufacturer will, at its own expense, replace or repair any defective product during the warranty period (does not include the aforementioned costs). **This warranty is valid only if the installation and care instructions have been followed.**

This warranty does not cover damage caused by abuse, neglect, misuse, impacts, improper handling, modifications made to the product, usage of abrasive or chemical products. In that event, the warranty will be revoked without further recourse. This warranty is limited to the manufacturer's choice regarding replacement or repair. No compensation may be claimed as a result of an accident during installation or during the use of the product. The warranty does not apply to stains caused by ferrous or hard water. Do not use abrasive products or products that contain compounds such as ammonia, solvent or other aggressive agents. The use of other cleaners can alter the properties of the product such as brightness or color. If using another cleaner, perform a preventive test somewhere on an inconspicuous wall. The client will lose the right to any claim if the products supplied are modified, transformed, manipulated or processed in an inappropriate manner. To exercise the right to the warranty, an annual depreciation for use and wear will apply: 1/5 per year for commercial use and 1/15 per year for domestic use, starting from the date of purchase.

TECHNOFORM INDUSTRIES LTD.

1350 Des Cascades Street, Châteauguay, Quebec J6J 4Z2
Tel.: 450-699-2424 | Toll free: 1-877-377-4494 | Fax: 450-699-8484
info@technoform.ca

technoform.ca | surface-design.co